

Depths are in metres and are reduced to Chart Datum, which is approximately the level of Mean Lower Low Water. Heights are in metres above Mean Sea Level. Positions are referred to WGS84 Datum. Navigational marks: IALA Maritime Buoyage System - Region B (Red to starboard). Projection: Transverse Mercator.

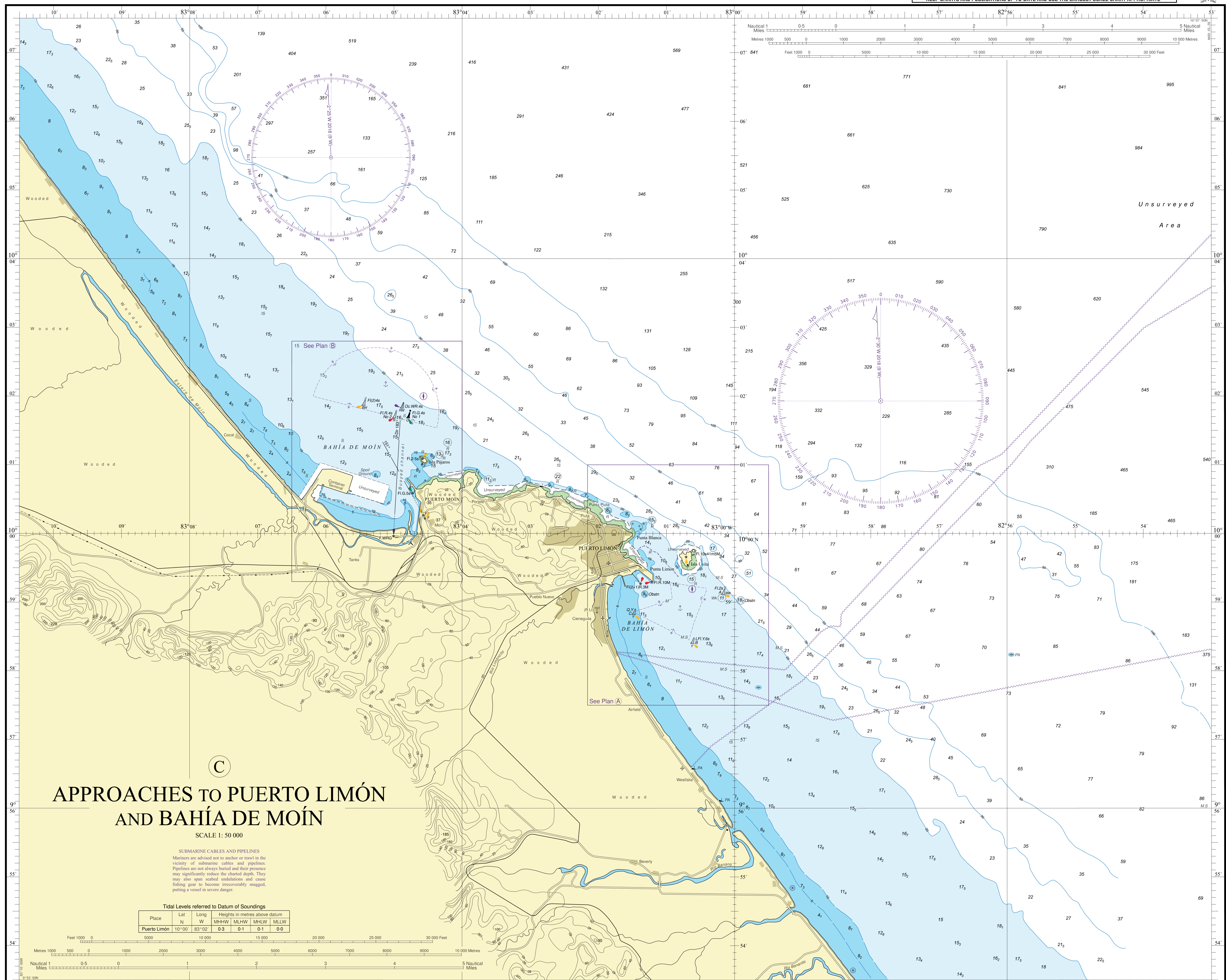
Source: Costa Rican surveys to 2016 and United States Government charts of 1989 and 1990 with later corrections, based mainly on Costa Rican surveys of 1968 to 2011, and a German Government chart of 1982. Depths in upright figures are from smaller scale surveys. Later information has also been included.

# PORTS ON THE CARIBBEAN COAST OF COSTA RICA

© Crown Copyright 2018. All rights reserved. This document is protected by international copyright law. It is derived from Crown Copyright information and from copyright information published by other organisations. No part of this document may be reproduced, stored in a retrieval system or transmitted in any form or by any means, electronic, mechanical, photocopying, recording or otherwise without the prior written permission of the UK Hydrographic Office (www.ukho.gov.uk).

**IMPORTANT - SEE RELATED ADMIRALTY PUBLICATIONS**  
Notes to Mariners (Annual, Permanent, Preliminary and Temporary), NP5011 (Symbols and Abbreviations), The Mariner's Handbook (especially Chapters 1 & 2 on the use, secondary and functions of charts), Sailing Directions (Pilot), List of Lights & Fog Signals, List of Radio Signals, Tide Tables (or their digital equivalents).

**KEEP CHARTS AND PUBLICATIONS UP-TO-DATE AND USE THE LARGEST SCALE CHART APPROPRIATE.**



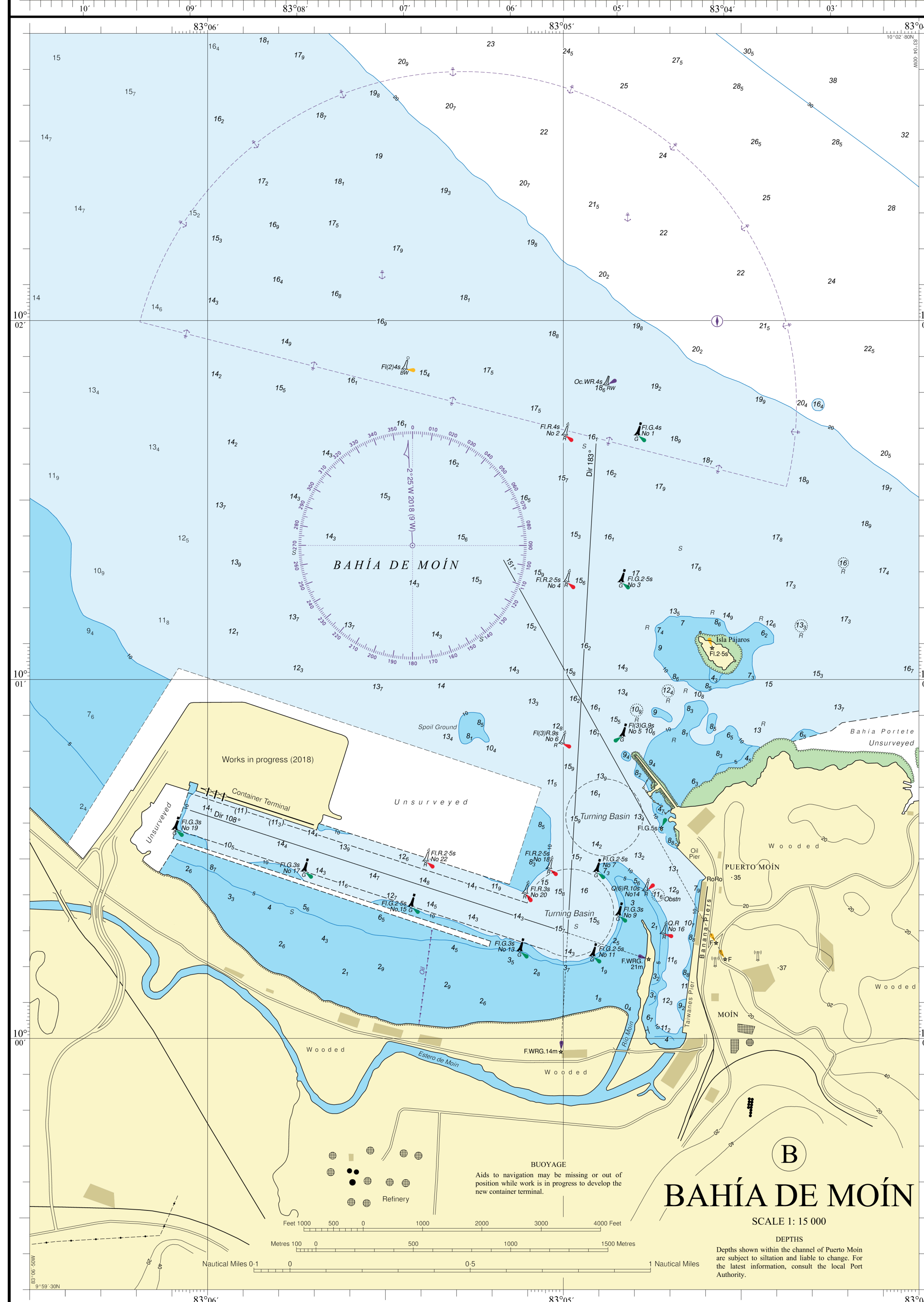
## APPROACHES TO PUERTO LIMÓN AND BAHÍA DE MOÍN

SCALE 1: 50 000

**SUBMARINE CABLES AND PIPELINES**  
Matters are advised not to anchor or travel in the vicinity of submarine cables and pipelines. Pipelines are not always buried and their presence may significantly reduce the charted depth. They may also span shallow undulations and cause fishing gear to become irretrievably snagged, putting a vessel in severe danger.

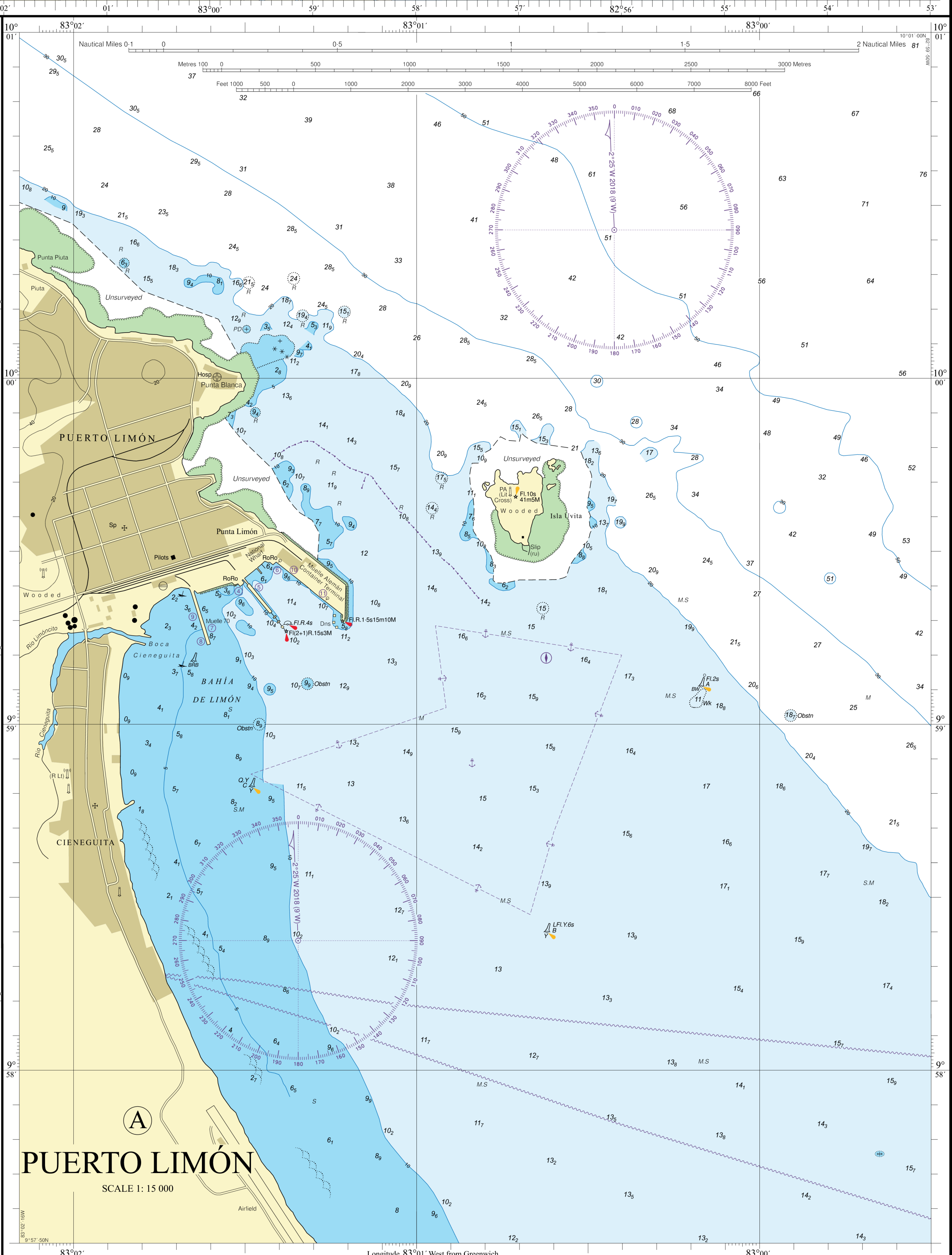
Tidal Levels referred to Datum of Soundings

Place	Lat	Long	Height in metres above datum			
	N	W	MHHW	MLHW	MPLW	MLLW
Puerto Limón	10°00'	83°02'	0.3	0.1	0.1	0.0



## BAHÍA DE MOÍN

SCALE 1: 15 000



## PUERTO LIMÓN

SCALE 1: 15 000

